



Dando Drilling International

Dando Multitec 9000

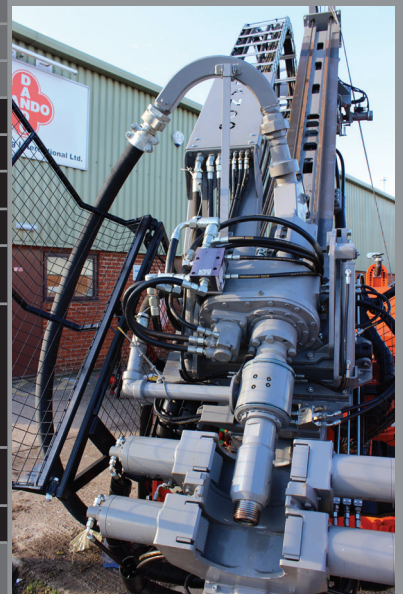
A high performance, multipurpose drilling rig with 9000kgf pullback, ideal for water, mineral exploration, geotechnical investigation, core drilling and GSHP drilling applications. The track mounted machine's compact and lightweight design allows it to operate in tight spaces with limited access.



Dando Multitec 9000

Drilling Rig Specification

Carrier Options	Crawler mounted is standard (with various track options available) but can also be supplied on: Heavy duty commercial 4 x 4 truck - Trailer mounted - Skid - Mounted on customer own support vehicle/structure		
Deck Engine	Standard fitting: VM Sun 102 HP diesel engine standard		
Mast Dimensions	Working mast height using main winch: 5500mm	Working mast using the rotary head: 3600mm	Mast dump to 45°
Head Traverse	Hoist = 6m/m (20ft/min)	Rapid Hoist = 26m/min (85.5ft/min)	
	Feed = 20.25m/min (66ft/min)	Rapid Feed = 36.5m/min (120ft/min)	
Mast Capacity	Pullback: 9000kgf	Pulldown: 3250kgf	Hook load (max): 6000kgf
Rotary Head Performance	Standard	Rotation (max) 436rpm	Torque (max) 6000Nm
	Option 1	Rotation (max) 750/800rpm	Torque (max) 4000Nm
	Other options available Rotary head tilt and side shift		
Drill Table and Break Out System	As standard - Double acting hydraulic make up and break out clamp. With minimum clamping diameter of 60mm and a maximum of 250mm		Other options available
Main Winch	Maximum single line pull: 2040kg	Maximum speed: 41m/minute	Drum capacity: 57m of 10mm wire rope
Wireline Winch (Optional)	Maximum single line pull: 1000kg	Maximum speed: 120m/minute	Drum capacity: 650m of 6mm wire rope
Foam Pump	Standard: Hydraulically driven duplex pump	Maximum flow rate: 34 litres/minute	
		Maximum discharge pressure: 750psi	
Other options available			
Inline Oil Lubricator	Fitted as standard and used when operating a DTH hammer		
Hydraulic System	Hydraulic power circuit based on load sensing hydraulic pumps and proportional control valves		
Drillers Control Panel	Uncomplicated and user friendly with ergonomic layout mounted on a swing out arm		
Rod Spin Safety Guard	Fitted as standard		
Levelling Jacks	Two front and two rear jacks with individual locking valves		
Lighting and Electrical System	Rig is provided with control panel and mast (optional) lighting. Electrical system is 12 volt		
Drilling Capacities*	4" RC (25kg/m) drill rod = 288m		
	3 1/2" (13.5kg/m) drill rod = 533m		
	HQ (11.6kg/m) drill rod = 620m		
	NQ (8.0kg/m) drill rod = 900m		
Optional Equipment	RC Drilling Conversion Kit - For reverse circulation drilling applications		
	Heavy Duty Winch - Hoisting capacity 6000kg single line pull		
	Drill Rod Rack - Mounted on carrier if truck or trailer		
	Duplex 5" x 6" Mud Pump - When the rig is mounted on a truck or trailer		
	Hydraulic Foot Clamp - Jaws to suit BQ up to PQ wireline drill rods. Break out system is a double acting hydraulic cylinder with adjustable wrench		
	SPT swing in hammer attachment - This drop weight runs on two guide bars guaranteeing a friction free fall. The weight is fully guarded and can be quickly changed for either SPT Testing or Dynamic Probing standards. Trip Hammer Speed: 0 - 45 blows per minute Trip Hammer Drop: 500mm / 750mm Trip Hammer Weight: 50kgs / 63.5kgs		
	Mast extension - A detachable and foldable mast section that can be fitted to allow the pulling of 6m drill rods.		
Working Dimensions	Track options: Option 1=Triple grouser. Option 2=Single grouser. Option 3=Rubber plate		
	Length: 5000mm Width: (working) 2200mm (travelling) 1420mm		



* Based on 80% of drill string weight in dry hole

Please note: All figures and claims made here are indicative and Dando Drilling International reserves the right to make alterations to specification detail without notice. All images are for reference only and may not represent the exact specification outlined in this document.

Dando Drilling International Limited
www.dando.co.uk
info@dando.co.uk
tel: +44 (0) 1903 731312
fax: +44 (0)1903 730305